

GHG-TS Stainless Steel Torque Hinge

Features

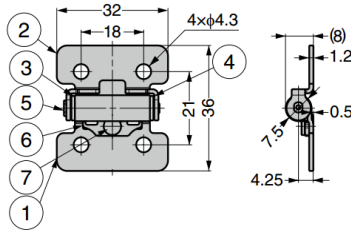
- Hinge with friction torque holds lid / door in desired position
- Available in 3 sizes
- Can be installed to aluminium frame
- Passed 20,000 life cycle test

Notes

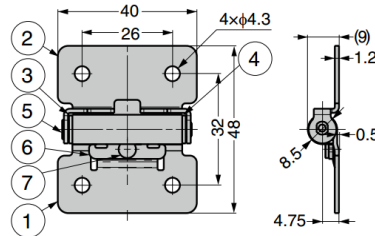
- Operating temperature: -10°C ~ 50°C
- Operating humidity: 90% RH or less
- Ensure hinge shafts are aligned during installation



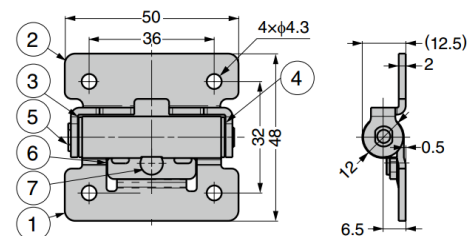
GHG-TS03



GHG-TS07



GHG-TS15



No.	Part Name	Material	Finish / Colour
①	Body	Stainless Steel (SUS304)	Barrel Polished
②	Base		
③	Rotating Tube L	POM	Black
④	Rotating Tube R		

No.	Part Name	Material	Finish / Colour
⑤	Shaft	Stainless Steel (SUS303)	-
⑥	Press Washer	Stainless Steel (SUS304)	Barrel Polished
⑦	Pin	Stainless Steel	-

Part No.	Torque (per piece)	
GHG-TS03	0.35 N.m	+40% -20%
GHG-TS07	0.7 N.m	+40% -20%
GHG-TS15	1.5 N.m	+40% -20%